

AtoN University High Intensity Training

SPX Aids to Navigation (AtoN) University high intensity obstruction light training offers hands-on instruction in a classroom setting or at an approved field location of your choosing—an opportunity unequaled in the industry.

AtoN University covers a range of information from component-level diagnostics and maintenance to FAA lighting compliance guidelines. Various training topics are outlined below and can be tailored to fit your specific needs.

Classes are held in Franklin, TN, just south of Nashville.

Training Topics

Both LED and xenon classes will cover the following topics:

- FAA lighting guidelines
- Lighting system configurations
- NOC utilization
- System overview
- Controller interface
- Installation procedures
- Packaging inventory
- Pre-install checklist
- Addressing radio frequency (RF) and electromagnetic interference (EMI)
- Wiring diagrams/schematics
- Troubleshooting methods
- Repair techniques
- RMA and warranty procedures



LED-SPECIFIC TOPICS

- Display of graphic annotated tower via web base
- WiFi interface options

XENON-SPECIFIC TOPICS

- Eagle access
- Preventative and routine maintenance
- Eagle programming, punch downs & diagnostics



High Intensity Training

Field Location Training

Reduce the time spent in a classroom and avoid decreased work production by scheduling an AtoN instructor to conduct onsite field training at an approved location of your choosing. Onsite training will include all stages of product installation, including safety practices, time-saving techniques, manufacturer requirements and proper guidance based on current FAA and FCC regulations. An AtoN representative can be made available to climb to tier 1 and verify correct installation practices are followed. If man basket or elevator is present, giddiness and overall tower site can be inspected.

- Review site specific drawings and wiring diagrams
- Detailed overview of programming options
- Step-by-step installation procedures
- Site walk; including completing JHA
- Inspect materials after installation
- Inventory of installation items
- Perform lighting inspection
- Preventative maintenance

Investment

Individual classroom rate: \$275 each
(Franklin-based training only; pricing is for up to 15 people per session)

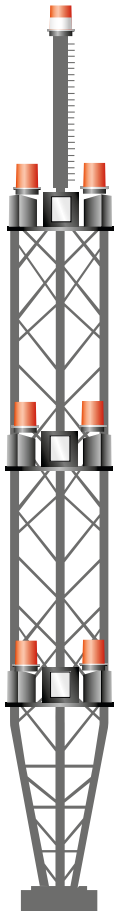
Field training available on request.

- 1-day travel and onsite field training: \$1,800
- Each additional day spent onsite \$1,000

For more information or to schedule:

- Visit www.flashtechology.com/training
- Email flashtraining@spx.com
- Call Brian DeGeorgio at +1.615.503.2032

FAA BROADCAST TOWER LIGHTING



FAA AC 70/7460-1M

F3 Tower Type

- Over 700' but not more than 1050' excluding any appurtenances
- 1 - L-864/L-865 AOL dual (red/infrared/white) medium intensity beacon
- 6 - L-864 red/infrared beacons
- 9 - L-856 high intensity beacons

FAA AC 70/7460-1L towers do not have an infrared requirement.

G tower have no appurtenances greater than 40' and do not require an AOL beacon

* Call for details.



FAA AC 70/7460-1K

F3 Tower Type

- Over 700' but not more than 1050' excluding any appurtenances
- 1 - L-864/L-865 AOL dual medium intensity beacon
- 6 - L-864 red beacons
- 9 - L-856 high intensity beacons
- 9 - L-810 marker lights

G tower have no appurtenances greater than 40' and do not require an AOL beacon