

FTB 311L Dual Xenon and LED Lighting System

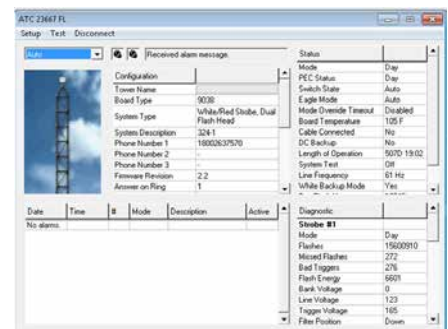
The FTB 311L is an L-865/L-864 system that includes a white xenon strobe for day, a red LED light for night and 3 LED markers. It is designed for structures 200' to 500' AGL (FAA tower type E1-E2).

Standard Features

- Automatic fail safe to day mode and notification if system has not changed states in 19 hours
- Data available for compliance with QLI waiver
- TechEagle™ diagnostics and programming
- Separate flashheads for ease of maintenance
- Advanced Relay Monitoring (ARM™) - 7 dry contact data points
- NEMA 4X stainless Steel outdoor rated enclosure
- RS485 bus for plug and plan install to Flash FTW series monitoring systems
- 12 LED Indicators to convey operating status
- 2-year warranty on all Xenon parts including strobe tube
- 5-year warranty on LED flashhead and LED markers
- FTB 311 base unit can be configured to interface with existing red system

Eagle 1.0 User Interface

- The TechEagle interface via laptop provides onsite alarm notification, diagnostics and programming.



FTB 311L

SPECIFICATIONS

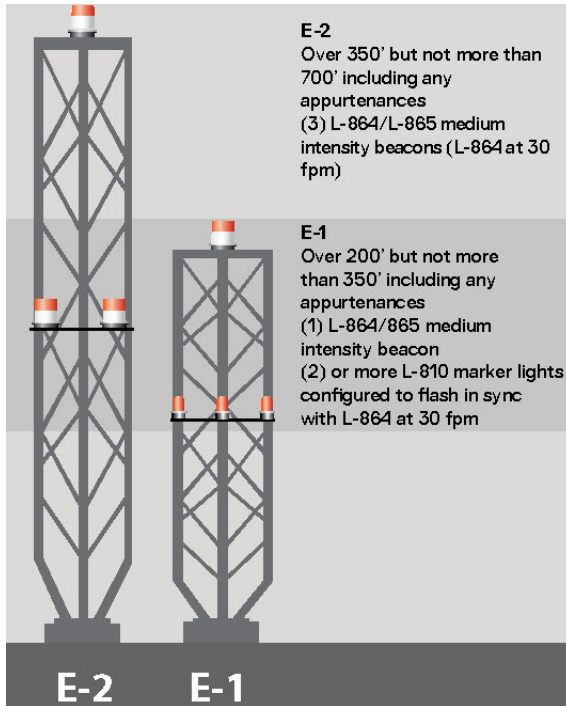
Input Voltage and Frequency	120 or 240 VAC, 60 Hz 110 or 230 VAC, 50 Hz 208-240 VAC, 50 Hz
Marker Dimensions	9 x 2.75 x 2.13" (228.6 x 69.9 x 54.1 mm)
Marker Weight	1.6 lbs. (0.7 kg)
LED FH Dimensions	15.75" dia. x 7.31" (400.05 mm dia. x 185.67 mm)
LED FH Weight	26.3 lbs. (11.9 kg)
LED FH Aerodynamic Wind Area	99.125 in ² (2517.775 m ²)
Controller Dimensions	14 x 16.7 x 8.4" (355.6 x 425.5 x 214.4 mm)
Controller Weight	51 lbs. (23 kg)
Protection Rating	IP65, NEMA 4X

POWER CONSUMPTION

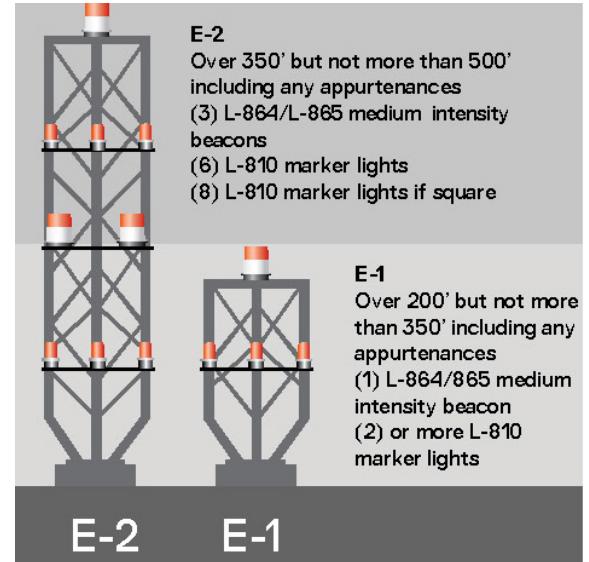
FH	White day – 130 watts Red night – 20 watts White night backup – 75 watts
Marker	2.1 Watts per marker

FAA DUAL TOWER LIGHTING

FAA 70/7460-1L



FAA 70/7460-1K



FLASH TECHNOLOGY 

flashsales@spx.com | flashtechology.com/obstruction | 1.615.503.2000

©2020 Flash Technology. All rights reserved. Data and specifications subject to change without notification. ISO 9001:2015. D311L-01 Rev D