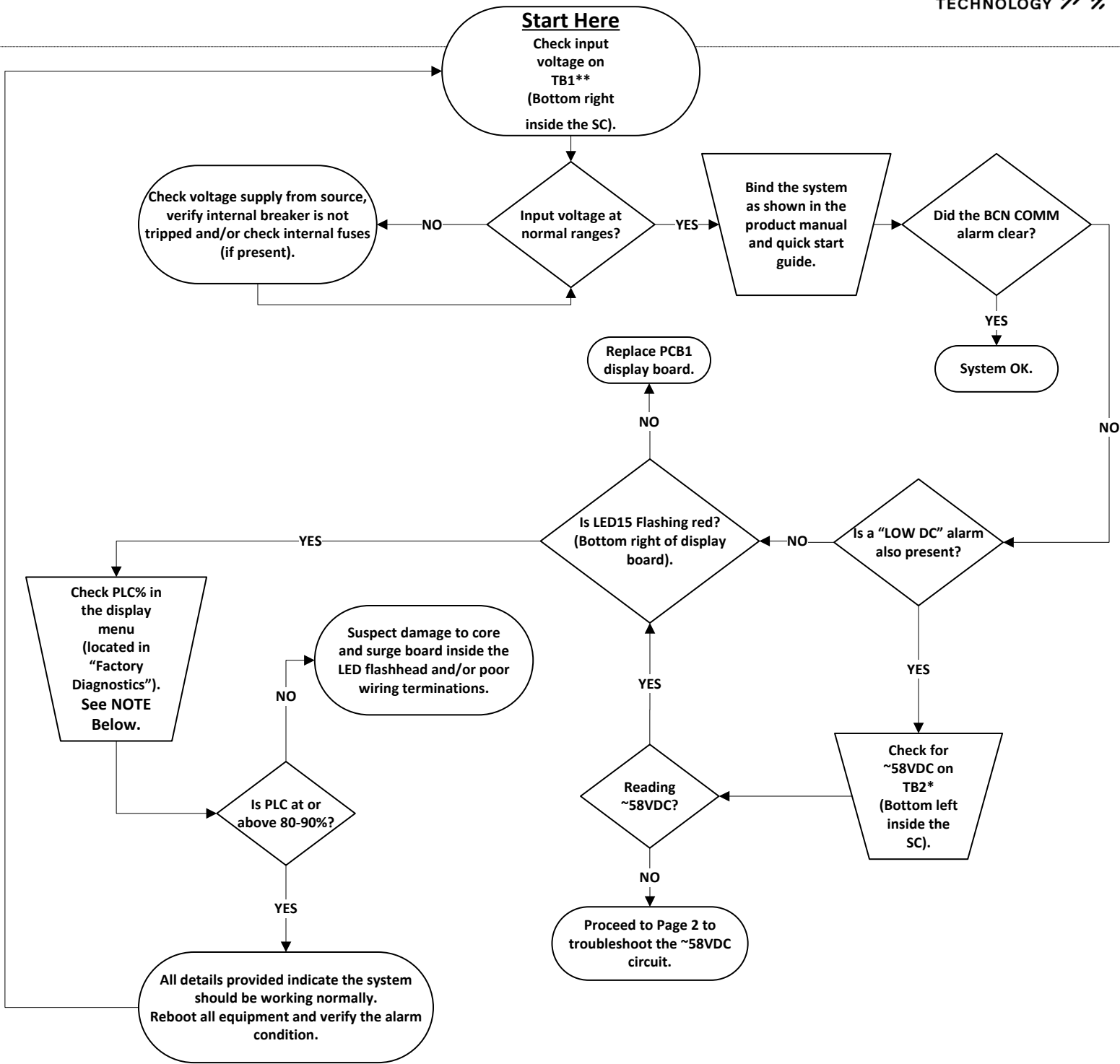


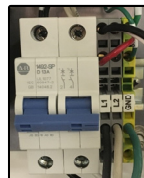
Beacon (BCN) Comm Fail (Alarms are found next to "STATUS" on the main display screen).



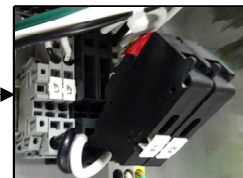
NOTE! The following password is required if controller firmware is below V3.6 (Use the UP and DOWN arrows).
Password: UP, DOWN, UP, DOWN, UP, UP then press **ENTER**



*TB2 (Terminal Block #2)
-Output voltage to the tower.



OR



**TB1 (Terminal Block #1)
-Input Voltage.

Troubleshoot TB2 Circuit (~58VDC)

