

4

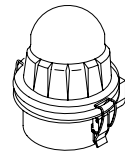
3

2

1

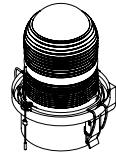
NOTE: L-810 MARKERS WILL VARY BY KIT (SEE PACKING SLIP)

A1



(LED-MARKER 36XX, 37XX)

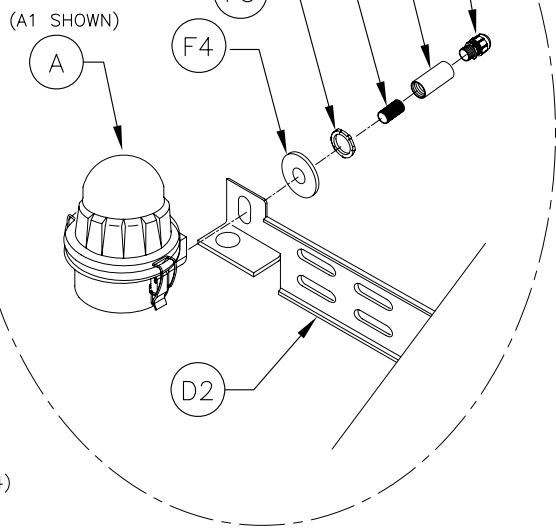
A2



(MARKER-INCANDESCENT)

REVISIONS					
ZONE	LTR	DESCRIPTION	DR	DATE	APPR.
	D	UPDATED DRAWING VIEWS, ECO 5521	JMA	08/03/11	HK

SIDE MOUNT MARKER LIGHT INSTALLATION

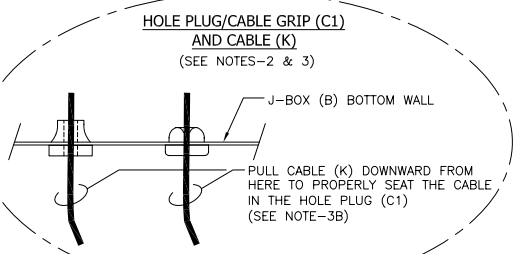
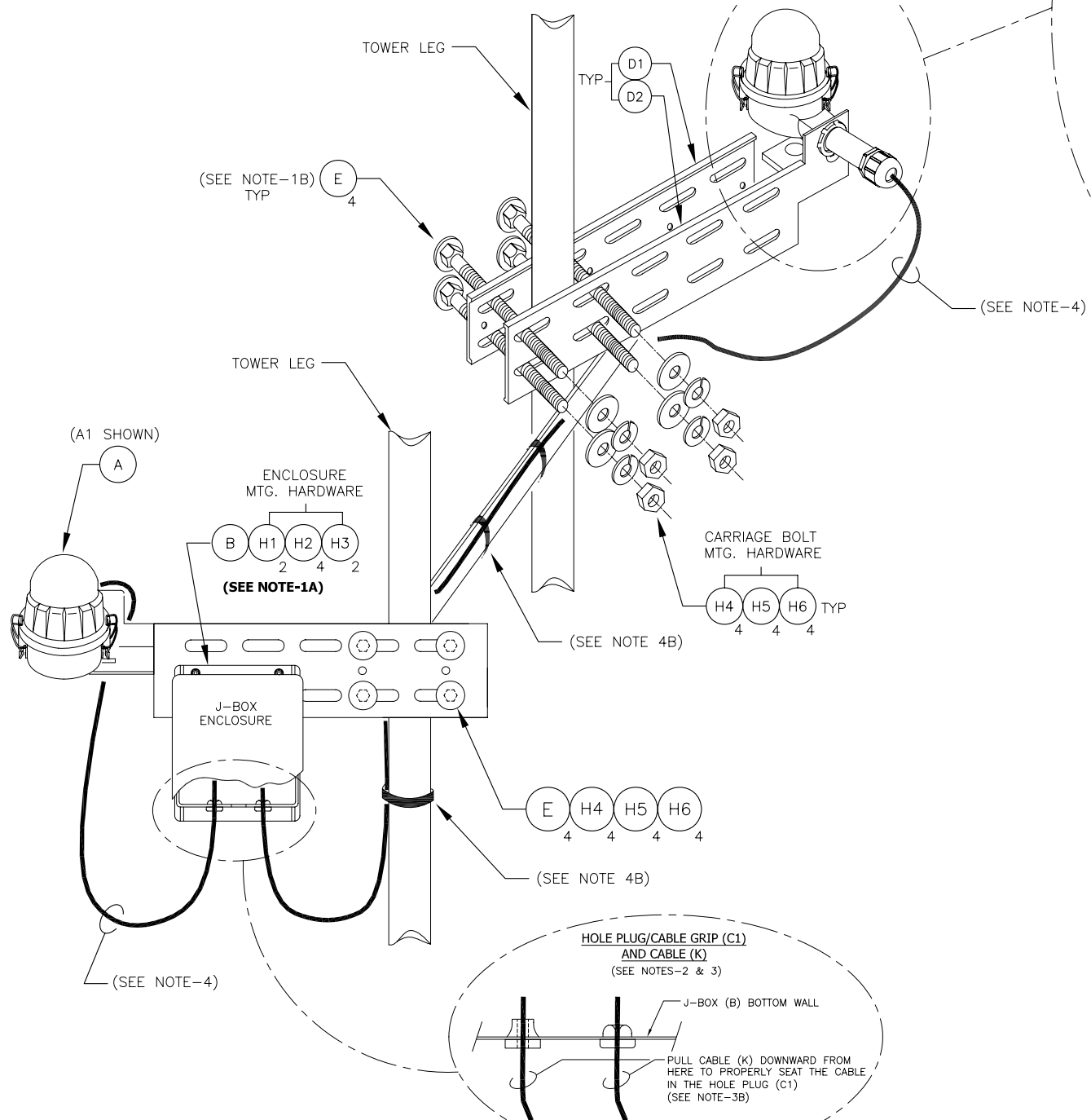


ITEM	P/N	DESCRIPTION	COMPONENT QTY				UNITS
			2 MKR	3 MKR	4 MKR		
A	F(XXXXXX)	L-810 MARKER FIXTURE (SEE PACKING SLIP FOR PART NUMBER)	2	3	4	EA	
B	F3136105	JUNCTION BOX ENCLOSURE (SEE NOTE 1A)	1	1	1	EA	
C1	F5902390	HOLE PLUG/CORD GRIP - 0.50"	6	6	6	EA	
C2	F4900156	CORD CONNECTOR 3/4" BLACK PLASTIC	2	3	4	EA	
D1	F3990810	BRACKET, ADJUSTABLE MOUNTING	2	3	4	EA	
D2	F3991206	BRACKET, MARKER UNIVERSAL	2	3	4	EA	
E	F5990119	CARRIAGE BOLT - 0.5"-1.3 X 12" LONG (HDG)	8	12	16	EA	
F1	F5991885	COUPLING, 0.75" RIGID CONDUIT	2	3	4	EA	
F2	F5991678	NIPPLE, 0.75" X CLOSE STEEL	2	3	4	EA	
F3	F5991691	LOCKNUT, 0.75" CONDUIT	2	3	4	EA	
F4	F5900075	WASHER REDUCER, 1.00" - 0.75", STEEL	2	3	4	EA	
G1	F5991720	SCOTCHLOCK - YELLOW (USED WITH LED MARKERS ONLY)	8	12	16	EA	
G2	F5991722	SCOTCHLOCK - GRAY	4	4	4	EA	
G3	F5900959	FORK LUG, #8 YELLOW (USED WITH INCANDESCENT MARKERS ONLY)	8	12	16	EA	
H1	F5900761	SCREW, 1/4"-20 X 3/4" PPH	2	2	2	EA	
H2	F5901102	FLATWASHER, 1/4"	4	4	4	EA	
H3	F5900436	NUT, ELASTIC STOP, 1/4"-20	2	2	2	EA	
H4	F5998335	HARDWARE, HOT DIPPED GALVANIZED-HEX NUT, 1/2"	8	12	16	EA	
H5	F5998336	HARDWARE, HOT DIPPED GALVANIZED-LOCKWASHER, 1/2"	8	12	16	EA	
H6	F5998337	HARDWARE, HOT DIPPED GALVANIZED-FLATWASHER, 1/2"	8	12	16	EA	
J1	F5991728	TAPE, 0.75" BLACK ELECTRIC	1	1	1	EA	
J2	F5900905	TAPE, ELECTRIC, 2"	1	1	1	EA	
J3	F5900906	TAPE, FILAMENT, 1"	1	1	1	EA	
K	F5991890	CABLE, TRAY RATED 12AWG/3C	20	40	50	FT	

BILL OF MATERIAL

INSTALLATION NOTES

- MARKER ENCLOSURE AND CARRIAGE BOLT INSTALLATION :**
 - LOCATE AND INSTALL MARKER JUNCTION BOX ENCLOSURE (B) TO ADJUSTABLE MOUNTING BRACKET (D1) APPROPRIATELY.
 - TRIM CARRIAGE BOLT (E) IF PERMISSIBLE, TO AVOID ANY INTERFERENCE.
- PREPARING HOLE PLUG/CORD GRIPS (C1) :**
 - TOOLS REQUIRED - #2 PHILLIPS SCREWDRIVER.
 - PUNCTURE INNER SEAL OF THE CORD GRIP (C1), BEFORE INSERTING CABLE (K).
 - ONLY PUNCTURE THE CORD GRIPS THAT WILL BE USED FOR CABLE INSTALLATION.
- INSTALLING THROUGH HOLE PLUG/CORD GRIPS (C1) :**
 - INSERT CABLE (K) THROUGH CORD GRIP (C1), LEAVING ENOUGH CABLE LENGTH TO MAKE ELECTRICAL CONNECTIONS.
 - FROM THE OUTSIDE OF THE JUNCTION BOX, PULL CABLE (K) DOWN TO SECURELY SEAT WITHIN THE CORD GRIP (C1).
- INSTALLING CABLE (K) AND ELECTRICAL CONNECTIONS :**
 - DIRECT ALL CONNECTING CABLES DOWN AND AWAY FROM JUNCTION BOX, TO PREVENT MOISTURE FROM ENTERING THE BOX.
 - SECURE ALL CABLES USING THE STANDARD 2-3-4 TAPING METHOD (J2 & J3) AS DIRECTED IN EQUIPMENT MANUAL.
 - USE SCOTCHLOCKS (G1 & G2) FOR ELECTRICAL CONNECTIONS.
 - WRAP SCOTCHLOCKS TIGHTLY WITH AT LEAST (6) LAYERS OF ELECTRICAL TAPE (J1).
 - INSTALL A DRIP LOOP, FOR CABLE, NEAR THE JUNCTION BOX AND AT EACH MARKER FIXTURE.



COMPANY CONFIDENTIAL: INFORMATION CONTAINED HEREIN IS CONFIDENTIAL. IT IS THE PROPERTY OF SPX CORPORATION. IT IS TO BE USED SOLELY FOR THE PURPOSE PROVIDED, AND IT IS NOT TO BE DISCLOSED TO OTHERS WITHOUT THE PRIOR WRITTEN CONSENT OF SPX CORPORATION.

UNLESS OTHERWISE SPECIFIED DIMENSIONS ARE IN INCHES TOLERANCES		PROPRIETARY		FLASH TECHNOLOGY 332 NICHOLS HILL LANE FRANKLIN, TN 37067 UNITED STATES OF AMERICA PHN: (615) 503-2000 FAX: (615) 261-2600	
DR	06/15/09	JMA	TITLE	MARKER KIT INSTALLATION	
CHK	06/17/09	AA	SIZE	DWG NO.	7790103
ENG			SCALE	NTS	SHEET 1 OF 1
PRDJ					
M/C					
MFG					
NEXT ASSY APPLICATION	USED ON	FINISH			
		N/A			
		N/A			

4

3

2

1

BASIC DWG NO.