

FT 736

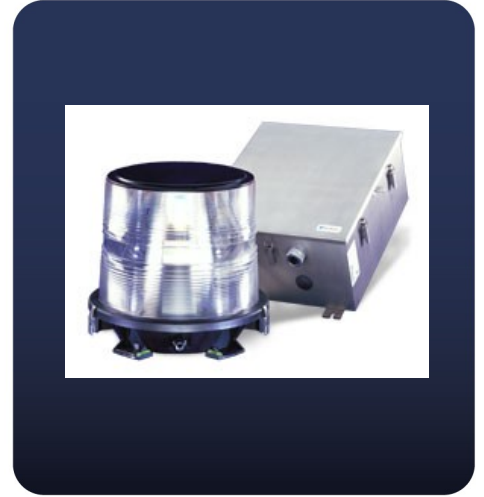
Heliport Acquisition Beacon

Features/Benefits

The FlashTech 736 provides highly conspicuous heliport acquisition by flashing an Omnidirectional white Morse Code "H" (4) flashes spaced 2/15 of a second apart, at (2) second intervals. This flashing pattern readily distinguishes this beacon from other lighting in the area.

Maintenance

An extensive instruction manual and drawings are provided with each system. Trained technical support staff and information on support programs are readily available through the ArgusON National Operations Center (NOC) services department. On-site training through Flash University are also available.



Components

Flashhead - FH 710

- ◆ High - 12,000 effective candelas (ECD)
- ◆ Medium - 2,000 effective candelas (ECD)
- ◆ Low - 75 effective candelas (ECD)
- ◆ A group of 4 flashes spaced 2/15 of a second apart, at 2 second intervals
- ◆ 360° horizontal coverage
- ◆ 17° vertical beam

Power Converter - PC 736

- ◆ 120, 208, 240 volts, 60Hz, or 230 volts 50Hz, single phase (specify on order)
- ◆ 410 watts power consumption
- ◆ Status relays with form C contacts, contacts change state on fail