

FT 723

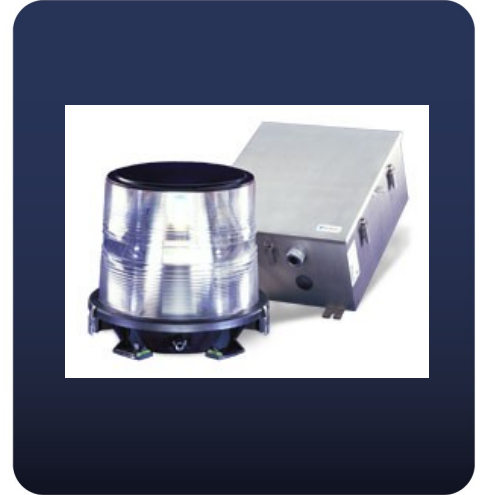
Airport Acquisition Beacon

Features/Benefits

The Flash Tech (FT) 723 provides omnidirectional flashes of white light. These distinctive flashes alert pilots to the general vicinity of the airport. The design, featuring no moving parts, keeps the cost of installation, operation and maintenance to a minimum.

Maintenance

An extensive instruction manual and drawings are provided with each system. Trained technical support staff and information on support programs are readily available through ArgusON's National Operations Center (NOC) services department. On-site training through Flash University are also available.



Components

Flashhead - FH 308

- ◆ 12,000 ± 25% effective candelas (ECD) - day - white
- ◆ 6,000 ± 25% effective candelas (ECD) - twilight - white
- ◆ 2,000 ± 25% effective candelas (ECD) - night - white
- ◆ 20 flashes per minute
- ◆ 360° horizontal coverage
- ◆ 5° vertical beam
- ◆ Weight: 17 lbs (7.7 kg)
- ◆ Dimensions (H x W): 17 in x 18.25 in (431.8 mm x 463.6 mm)
- ◆ Aerodynamic wind area: .93 square feet (.0864 square meters)

Power Converter - PC 723

- ◆ 120, 208, 240 volt 60 Hz , or 230 volt 50 Hz, single phase (specify on order)
- ◆ 130 watts power consumption
- ◆ Status relays with form C contacts