

FTB 311L

Medium Intensity Dual Xenon & LED Lighting System with Eagle

Application

The FTB 311L is an FAA L865/L864 system that includes a white xenon strobe for day, a red LED light for night and (3) LED markers to create an FAA tower type E1 or E2 dual for structures between 200' and 500' AGL.

Features/Benefits

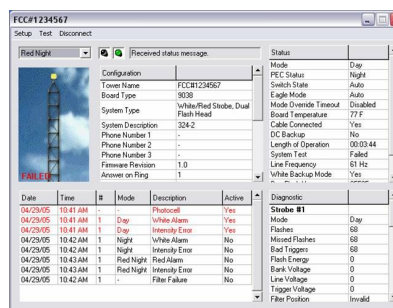
- ◆ Automatic fail safe to day mode and notification if system has not changed states in 19 hours
- ◆ Data available for compliance with QLI waiver
- ◆ TechEagle™ Diagnostics and Programming
- ◆ Separate flashheads for ease of maintenance
- ◆ ARM™ – Advanced Relay Monitoring – (7) dry contact data points
- ◆ NEMA 4X stainless Steel outdoor rated enclosure
- ◆ RS485 bus for plug and play install to Flash FTW Series Monitoring Systems
- ◆ (12) LED Indicators to convey operating status
- ◆ (2) Year warranty on all Xenon parts including strobe tube; (5) year warranty on LED Flash-head
- ◆ FTB 311 base unit can be configured to interface with existing red system
- ◆ TIA-222 certified for all mounting hardware



Eagle 1.0 User Interface

The TechEagle interface via laptop provides on-site:

- ◆ Alarm Notification
- ◆ Diagnostics
- ◆ Programming



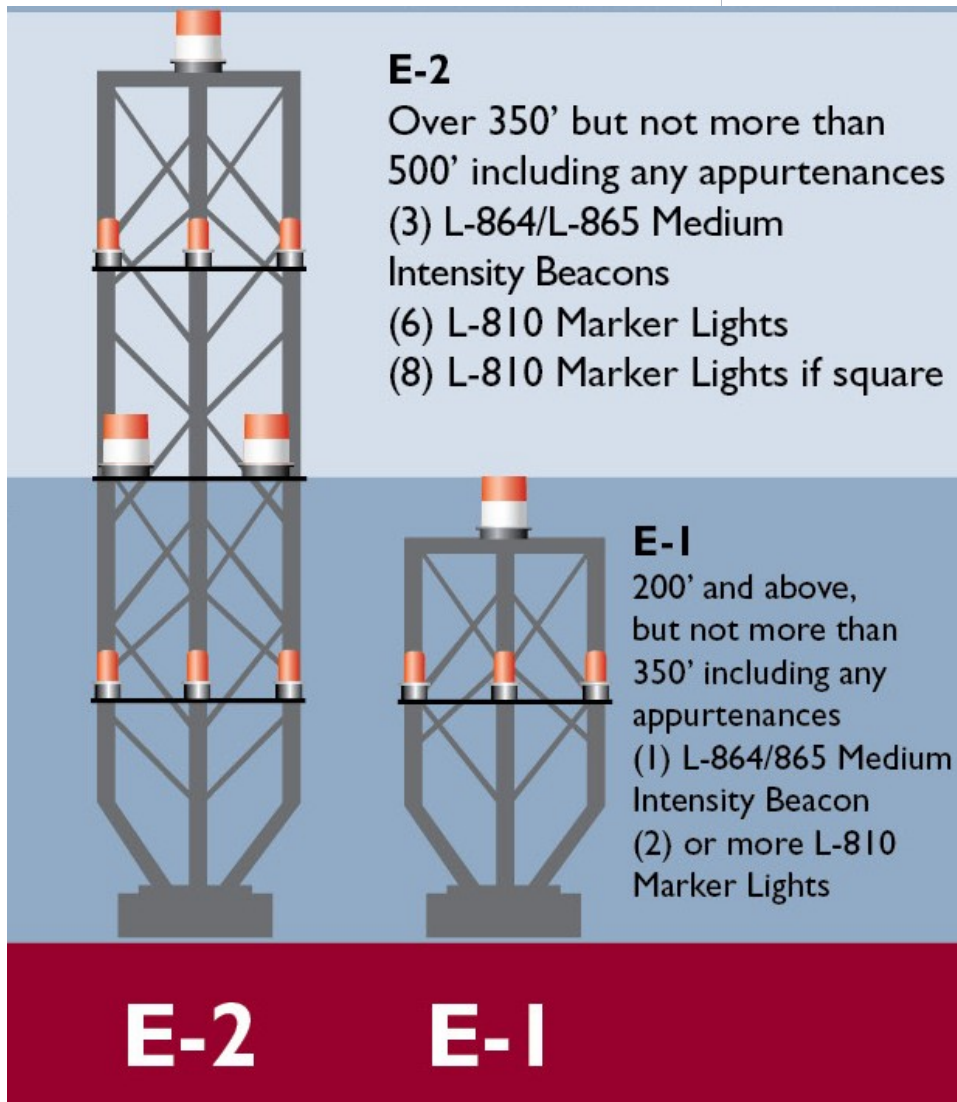
Power Consumption

- ◆ 130w—White Day
- ◆ 20w—Red Night
- ◆ 55w—White Night Backup
- ◆ 6.8w—Per Marker

FTB 311L

Medium Intensity Dual Xenon & LED Lighting System with Eagle

Diagram from FAA Advisory Circular AC 70/7460-1K Change 2, A1-18. The FAA determination of no hazard for these towers are: Chapters 2, 4, 8



These guidelines are for reference only. Please contact Flash for specific questions regarding obstruction marking.