

FTB 310

Medium Intensity White Xenon Lighting System with Eagle

Application

The FTB 310 is an FAA L865 system that includes a white xenon flashing light for day and night to create an FAA tower type D1 or D2 for structures between 200' and 500' AGL.

Features/Benefits

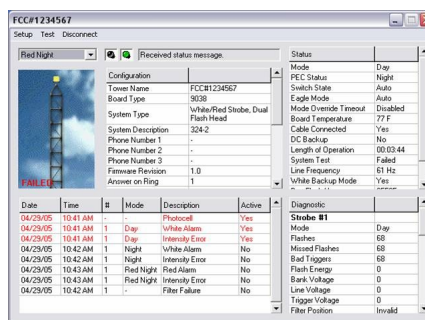
- ◆ ARM™ – Advanced Relay Monitoring – (7) dry contact data points
- ◆ Data available for compliance with QLI waiver
- ◆ Automatic fail safe to day mode and notification if system has not changed states in 19 hours
- ◆ Fresnel optics minimizes light scatter
- ◆ (12) LED indicators to convey operating status
- ◆ (2) Year parts warranty on all Xenon system components including tubes
- ◆ RS485 bus for plug and play install to Flash FTW Series Monitoring Systems
- ◆ Flash brand FREP power cable
- ◆ NEMA 4X stainless steel outdoor rated enclosure
- ◆ Accommodates 120-240 VAC 50/60 Hz
- ◆ 24/7/365 Monitoring & Call Center services
- ◆ Wireless synchronization available
- ◆ TIA-222 certified for all mounting hardware
- ◆ Listed on the FAA [Buy American Act](#) registry



Eagle 1.0 User Interface

TechEagle interface via laptop provides on-site:

- ◆ Alarm Notification
- ◆ Diagnostics
- ◆ Programming



Power Consumption

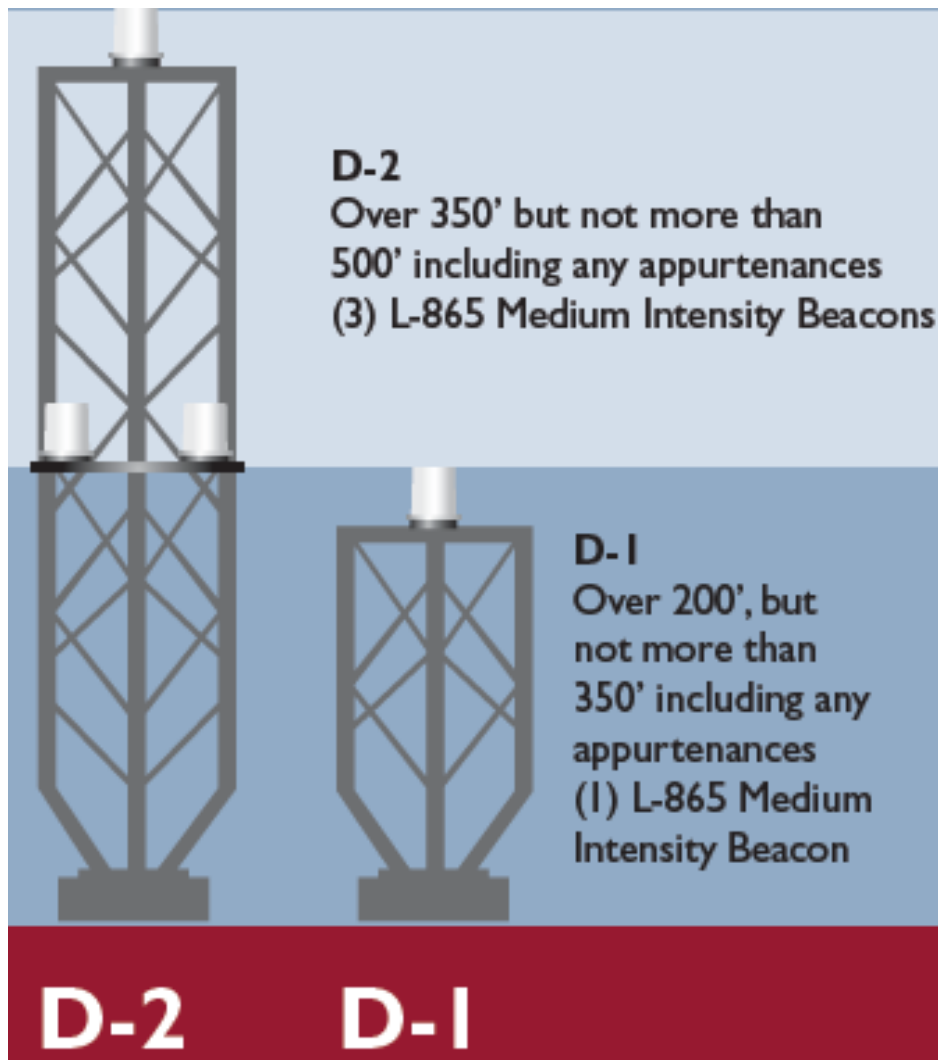
- ◆ 130w—White Day
- ◆ 55w—White Night

FTB 310

Medium Intensity White Xenon Lighting System with Eagle

XENON

Diagram from FAA Advisory Circular AC 70/7460-1K Change 2, A1-18. The FAA determination of no hazard for these towers are: Chapters 2, 4, 6



These guidelines are for reference only. Please contact Flash for specific questions regarding obstruction marking.

332 Nichol Mill Lane
Franklin, TN 37067



888-313-5274
flash.info@spx.com
www.flashtechnology.com