

FTB 310 Catenary

Medium Intensity White Xenon Lighting System with Eagle

Application

The FTB 310 is an FAA L866 catenary system that includes a white xenon flashing light for day and night for marking structures that support transmission lines that span across low terrain such as waterways, ravines and gorges. Flash sequence is middle—top—bottom at 60 flashes/min.

Features/Benefits

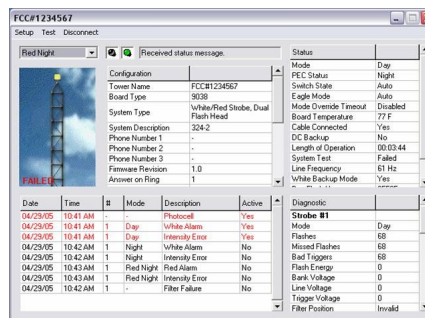
- ◆ ARM™ – Advanced Relay Monitoring – (7) dry contact data points
- ◆ Data available for compliance with QLI waiver
- ◆ Automatic fail safe to day mode and notification if system has not changed states in 19 hours
- ◆ Fresnel optics minimizes light scatter
- ◆ (12) LED indicators to convey operating status
- ◆ (2) Year parts warranty on all Xenon system components including tubes
- ◆ RS485 bus for plug and play install to Flash FTW Series Monitoring Systems
- ◆ Flash brand FREP power cable
- ◆ NEMA 4X stainless steel outdoor rated enclosure
- ◆ Accommodates 120-240 VAC 50/60 Hz
- ◆ 24/7/365 Monitoring & Call Center services
- ◆ Wireless synchronization available
- ◆ TIA-222 certified for all mounting hardware
- ◆ Listed on the FAA Buy American Act registry



Eagle 1.0 User Interface

TechEagle interface via laptop provides on-site:

- ◆ Alarm Notification
- ◆ Diagnostics
- ◆ Programming



Power Consumption

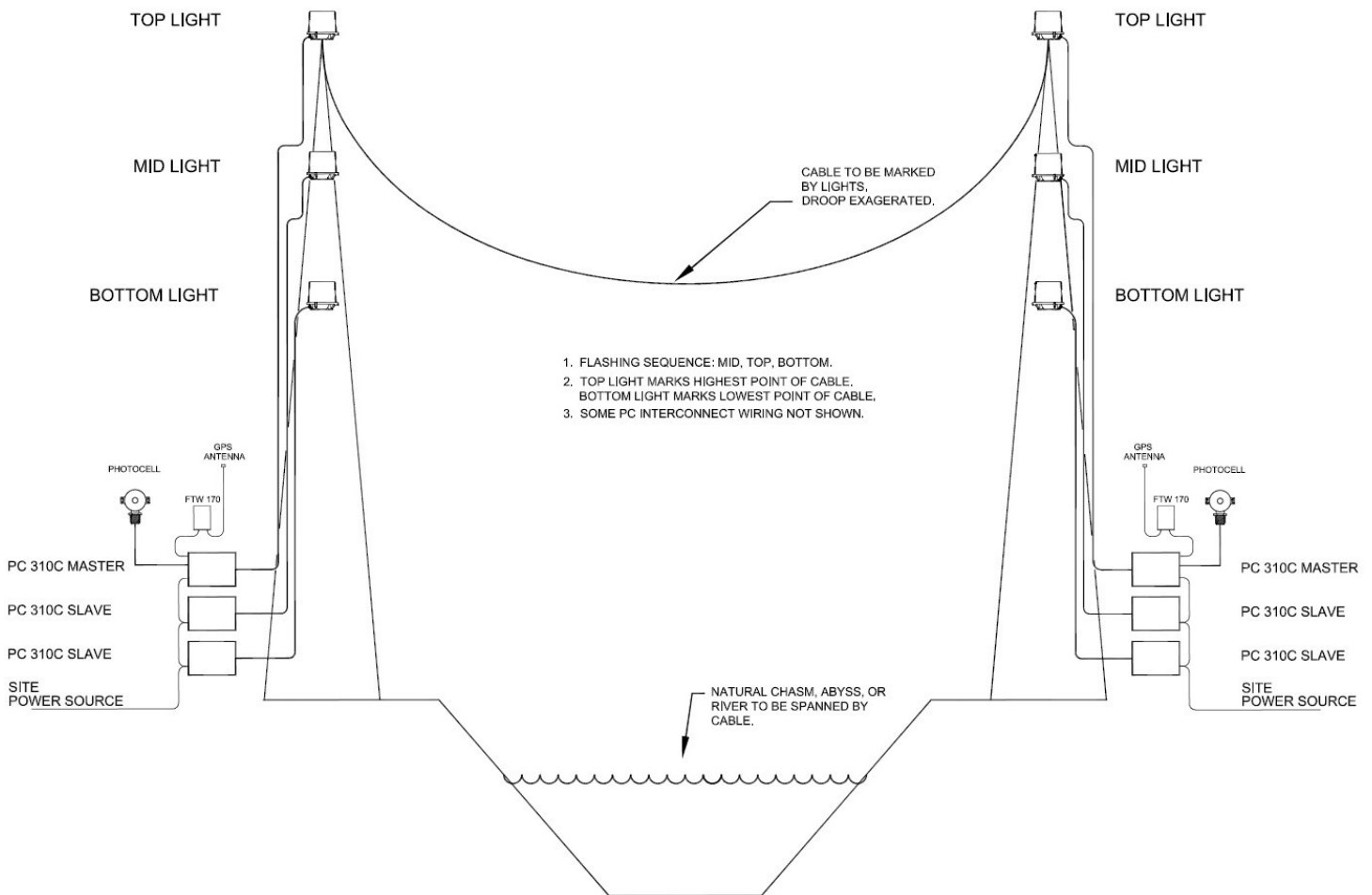
- ◆ 216w—White Day
- ◆ 94w—White Night

FTB 310 Catenary

Medium Intensity White Xenon Lighting System with Eagle

XENON

The FAA determination of no hazard for these towers are: Chapters 2, 4, 10



These guidelines are for reference only. Please contact Flash for specific questions regarding obstruction marking.

332 Nichol Mill Lane
Franklin, TN 37067



888-313-5274
flash.info@spx.com
www.flashtechnology.com