

# FTB 208

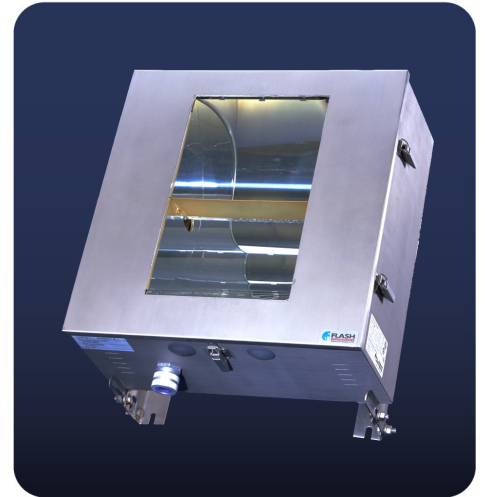
## High Intensity Catenary White Obstruction Beacon

XENON

### Application

The FTB 208 is an FAA type L857 that provides a white strobe for day and night for structures more than 500' AGL supporting overhead cables and wires suspended over canyons, valleys or waterways. The system is comprised of three lighting levels. The flash sequence is middle -- top -- bottom, with the interval between the top and bottom flashes equal to twice the interval between the middle and top flashes.

The Flash Technology 121 system controller adds hardware which allows for Eagle SMART monitoring & diagnostics.



### Features/Benefits

- ◆ Used to mark Catenary towers
- ◆ Self contained Power converter and Flashhead reduces installation costs
- ◆ No High Voltage Wiring required eliminates the need for special cable
- ◆ Remote Monitoring Capability
- ◆ NEMA 4X – Stainless steel outdoor rated enclosure
- ◆ (2) Year warranty on all parts including strobe tube

**Manufactured to specifications for: FAA Type L-857; FAA-AC 150/5345-43E; Transport Canada K310B; ICAO Annex 14 Type A (white); DGAC**

332 Nichol Mill Lane  
Franklin, TN 37067



888-313-5274  
flash.info@spx.com  
www.flashtechnology.com