

FTB 204X

High Intensity White Strobe

Split Enclosure with up to 1000' Extended Separation



XENON

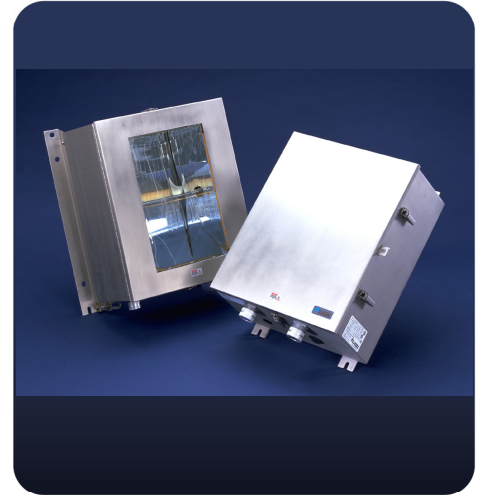
Application

The FTB 204X is an FAA type L-856 high intensity white xenon strobe system that provides white flashing lights for day, twilight and night for structures over 500' AGL. For FAA tower types B2 to B6 and C2 to C6.

Features/Benefits

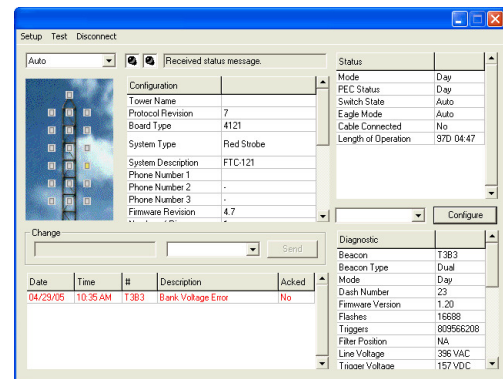
- ◆ ETL certified for FAA applications
- ◆ Certified unidirectional 120° horizontal beam
- ◆ Up to 1000' separation between PC and FH allowing antenna operation during most maintenance
- ◆ 90% of electronics including capacitors are in ozone free environment resulting in extended component life
- ◆ Power converter can be located outside RF field
- ◆ System includes EagleSmart controller, handheld programmer & software
- ◆ Available in multiple input voltages
- ◆ NEMA 4X stainless steel outdoor rated enclosure
- ◆ Custom installation kits and stamped drawings—see flip side
- ◆ 24/7/365 Monitoring & Call Center services
- ◆ Component level technical support 7am-7pm CST M-F
- ◆ Remote diagnostics with POTs connection to FTC 121
- ◆ (2) year warranty on all parts including tubes

Certified and Listed to meet all the environmental and performance criteria for: FAA Type L-856; FAA-AC 150/5345-43F. Manufactured to meet or exceed specifications for Transport Canada K310B, ICAO Annex 14 Type A (white); DGAC



EagleSmart

FTC 121 Eagle Controller – On site or remote diagnostics, programming and monitoring. Digital display with drop down menus.



Optional:

FTC 140 Controller– LED display with clear green/red indicators for simple alarm identifications

332 Nichol Mill Lane
Franklin, TN 37067



888-313-5274
flash.info@spx.com
www.flashtechology.com

FTB 204X

High Intensity White Strobe

Split Enclosure with up to 1000' Extended Separation

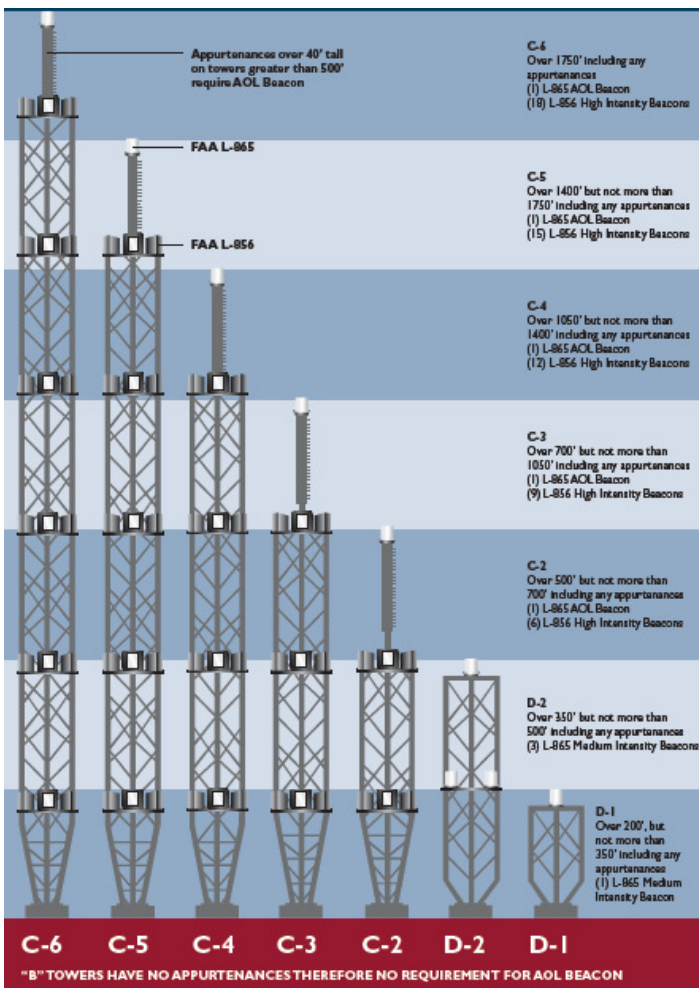


XENON

Custom Conduit and Wire Kits

For over 40 years Flash has designed and supplied FAA and NEC compliant electrical systems for towers, chimneys, and other structures. Our expertise includes lighting systems, elevator circuits, utility circuits, AC electrical distribution platform circuits, area lighting, fiber optic, telco, communication, lift booms, and other needs. State engineering stamped drawings for the United States and some US properties are available as an option.

Diagram from FAA Advisory Circular AC 70/7460-1K Change 2, A1-18. The FAA determination of no hazard for these towers are: Chapters 2, 4, 7



These guidelines are for reference only. Please contact Flash for specific questions regarding obstruction marking.

332 Nichol Mill Lane
Franklin, TN 37067



888-313-5274
flash.info@spx.com
www.flashtechnology.com